

An aerial photograph of a tropical beach. The left side shows a wide, white sandy beach. The right side shows the ocean with vibrant turquoise water and white foam from waves crashing onto the shore. The overall scene is bright and scenic.

PALAWAN

ISLAND

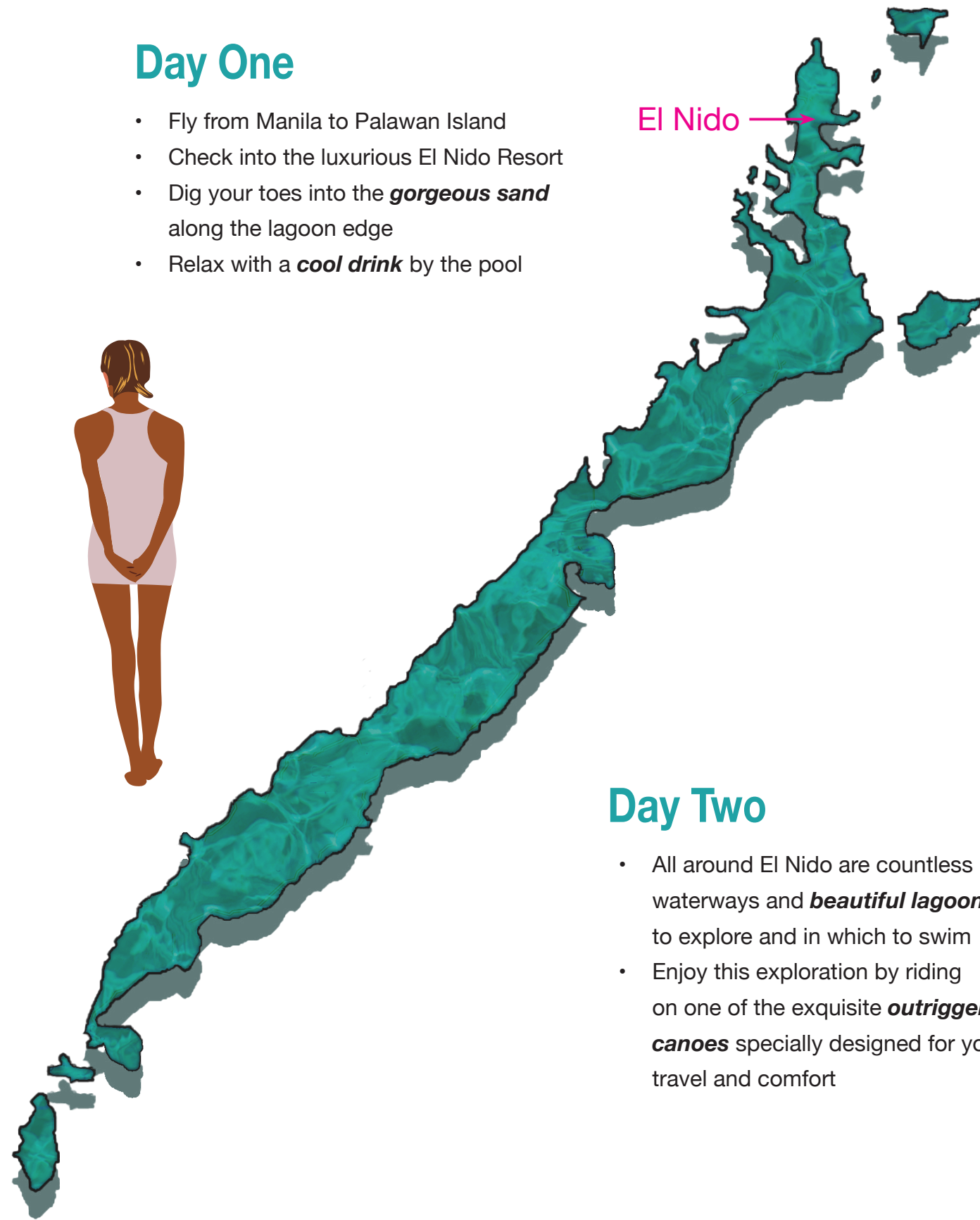
Philippine Paradise

Beaches
Lagoons
Outrigger Canoes

Day One

- Fly from Manila to Palawan Island
- Check into the luxurious El Nido Resort
- Dig your toes into the **gorgeous sand** along the lagoon edge
- Relax with a **cool drink** by the pool

El Nido



Day Two

- All around El Nido are countless waterways and **beautiful lagoons** to explore and in which to swim
- Enjoy this exploration by riding on one of the exquisite **outrigger canoes** specially designed for your travel and comfort



Day Three

- Discover **underwater caves** while scuba diving on nearby Dilumacad Island
- A 35 meter long tunnel leads to an underwater cavern with a sandy bottom where **schools of small fish** abound

Dilumacad Island

Puerto Princesa

Day Four

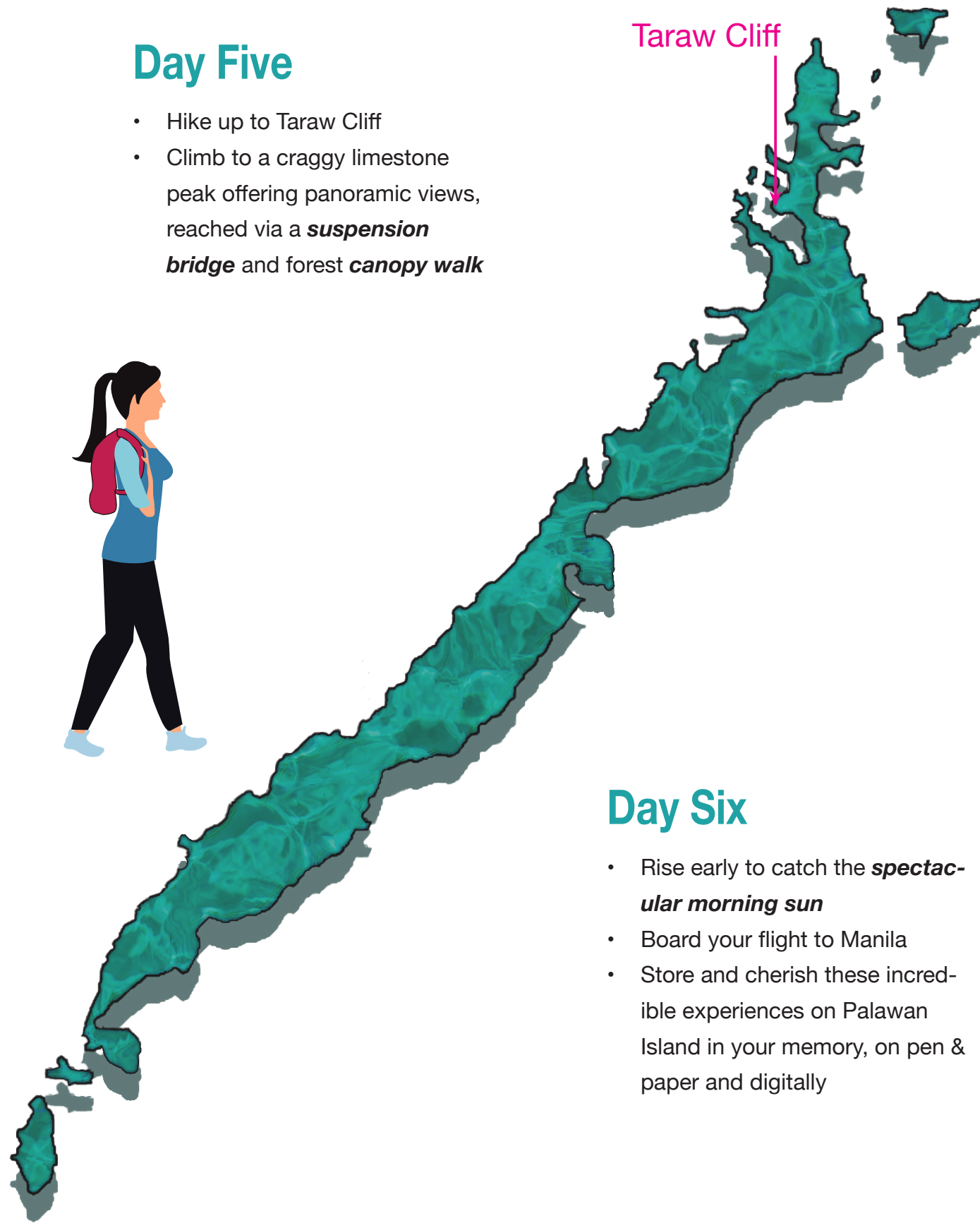
- Take local transport to the town of Puerto Princesa
- The Puerto-Princesa Subterranean River National Park features a spectacular karst landscape with an **underground river**
- Ride a raft through the tunnel entrance and along the river into **dramatic chambers** 120 meters wide and 60 meters high



Day Five

- Hike up to Taraw Cliff
- Climb to a craggy limestone peak offering panoramic views, reached via a **suspension bridge** and forest **canopy walk**

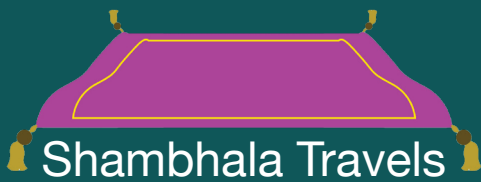
Taraw Cliff



Day Six

- Rise early to catch the **spectacular morning sun**
- Board your flight to Manila
- Store and cherish these incredible experiences on Palawan Island in your memory, on pen & paper and digitally





Shambhala Travels
www.shambhalatravels.com